

454 BIBLIOGRAPHY

- 455 Bordeyne F, Migné A, Davoult D (2015) Metabolic activity of intertidal *Fucus* spp.
456 communities: evidence for high aerial carbon fluxes displaying seasonal variability.
457 Mar Biol 162:2119–2129
- 458 Caut S, Angulo E, Courchamp F (2009) Variation in discrimination factors ($\Delta^{15}\text{N}$ and $\Delta^{13}\text{C}$):
459 the effect of diet isotopic values and applications for diet reconstruction. J Appl Ecol
460 46:443–453
- 461 Christie H, Norderhaug K, Fredriksen S (2009) Macrophytes as habitat for fauna. Mar Ecol
462 Prog Ser 396:221–233
- 463 Clarke K, Gorley R (2006) PRIMER v6: User Manal/Tutorial, PRIMER-E. Plymouth
- 464 Crawley K, Hyndes G, Vanderklift M, Revill A, Nichols P (2009) Allochthonous brown algae
465 are the primary food source for consumers in a temperate, coastal environment. Mar
466 Ecol Prog Ser 376:33–44
- 467 Cucherousset J, Villéger S (2015) Quantifying the multiple facets of isotopic diversity: new
468 metrics for stable isotope ecology. Ecol Indic 56:152–160
- 469 Darnis G, Robert D, Pomerleau C, Link H, Archambault P, Nelson RJ, Geoffroy M, Tremblay
470 J-É, Lovejoy C, Ferguson SH, Hunt BPV, Fortier L (2012) Current state and trends in
471 Canadian Arctic marine ecosystems: II. Heterotrophic food web, pelagic-benthic
472 coupling, and biodiversity. Clim Change 115:179–205
- 473 Dauby P, Khomsi A, Bouquegneau J-M (1998) Trophic relationships within intertidal
474 communities of the Brittany coasts: a stable carbon isotope analysis. J Coast
475 Res:1202–1212
- 476 Dethier MN, Williams SL (2009) Seasonal stresses shift optimal intertidal algal habitats. Mar
477 Biol 156:555–567

478 Duarte L, Rossi F, Docal C, Viejo R (2015) Effects of alga *Fucus serratus* decline on benthic
479 assemblages and trophic linkages at its retreating southern range edge. *Mar Ecol Prog*
480 *Ser* 527:87–103

481 Ellis JC, Shulman MJ, Wood M, Witman JD, Lozyniak S (2007) Regulation of intertidal food
482 webs by avian predators on New England rocky shores. *Ecology* 88:853–863

483 Forest A, Sampei M, Makabe R, Sasaki H, Barber DG, Gratton Y, Wassmann P, Fortier L
484 (2008) The annual cycle of particulate organic carbon export in Franklin Bay
485 (Canadian Arctic): Environmental control and food web implications. *J Geophys Res*
486 *Oceans* 113

487 Fry B (2006) *Stable Isotope Ecology*. Springer New York, New York, NY

488 Golléty C, Migné A, Davoult D (2008) Benthic metabolism on a sheltered rocky shore: role of
489 the canopy in the carbon budget. *J Phycol* 44:1146–1153

490 Golléty C, Riera P, Davoult D (2010) Complexity of the food web structure of the
491 *Ascophyllum nodosum* zone evidenced by a $\delta^{13}\text{C}$ and $\delta^{15}\text{N}$ study. *J Sea Res* 64:304–
492 312

493 Hawkins SJ, Watson DC, Hill AS, Harding SP, Kyriakides MA, Hutchinson S, Norton TA
494 (1989) A comparison of feeding mechanisms in microphagous, herbivorous, intertidal,
495 prosobranchs in relation to resource partitioning. *J Molluscan Stud* 55:151–165

496 Hyndes GA, Hanson CE, Vanderklift MA (2013) The magnitude of spatial and temporal
497 variation in $\delta^{15}\text{N}$ and $\delta^{13}\text{C}$ differs between taxonomic groups: Implications for food
498 web studies. *Estuar Coast Shelf Sci* 119:176–187

499 Jennings S, Maxwell T, Schratzberger M, Milligan S (2008) Body-size dependent temporal
500 variations in nitrogen stable isotope ratios in food webs. *Mar Ecol Prog Ser* 370:199–
501 206

502 Leclerc J, Riera P, Leroux C, Lévêque L, Davoult D (2013) Temporal variation in organic
503 matter supply in kelp forests: linking structure to trophic functioning. *Mar Ecol Prog*
504 *Ser* 494:87–105

505 Lee WY, Zhang XK, Van Baalen C, Arnold CR (1985) Feeding and reproductive performance
506 of the harpacticoid *Tisbe carolinensis* (Copepoda, Crustacea) in four algal cultures.
507 *Mar Ecol Prog Ser* 24:273–279

508 Legendre P (2014) *lmodel2: Model II Regression*.

509 Lehmann MF, Bernasconi SM, Barbieri A, McKenzie JA (2002) Preservation of organic
510 matter and alteration of its carbon and nitrogen isotope composition during simulated
511 and in situ early sedimentary diagenesis. *Geochim Cosmochim Acta* 66:3573–3584

512 Littler MM, Littler DS (1980) The evolution of thallus form and survival strategies in benthic
513 marine macroalgae: field and laboratory tests of a functional form model. *Am Nat*:25–
514 44

515 Lubchenco J (1978) Plant species diversity in a marine intertidal community: importance of
516 herbivore food preference and algal competitive abilities. *Am Nat*:23–39

517 McMeans BC, McCann KS, Humphries M, Rooney N, Fisk AT (2015) Food web structure in
518 temporally-forced ecosystems. *Trends Ecol Evol* 30:662–672

519 Migné A, Golléty C, Davoult D (2015) Effect of canopy removal on a rocky shore community
520 metabolism and structure. *Mar Biol* 162:449–457

521 Miller RJ, Page HM (2012) Kelp as a trophic resource for marine suspension feeders: a
522 review of isotope-based evidence. *Mar Biol* 159:1391–1402

523 Molis M, Koerner J, Ko YW, Kim JH, Wahl M (2006) Inducible responses in the brown
524 seaweed *Ecklonia cava*: the role of grazer identity and season. *J Ecol* 94:243–249

525 Nordström M, Aarnio K, Bonsdorff E (2009) Temporal variability of a benthic food web:
526 patterns and processes in a low-diversity system. *Mar Ecol Prog Ser* 378:13–26

527 Norton TA, Hawkins SJ, Manley NL, Williams GA, Watson DC (1990) Scraping a living: a
528 review of littorinid grazing. In: Johannesson K, Raffaelli DG, Ellis CJH (eds) Progress
529 in Littorinid and Muricid Biology. Springer Netherlands, p 117–138

530 Ouisse V, Riera P, Migné A, Leroux C, Davoult D (2011) Food web analysis in intertidal
531 *Zostera marina* and *Zostera noltii* communities in winter and summer. Mar Biol
532 159:165–175

533 Parnell AC, Inger R, Bearhop S, Jackson AL (2010) Source partitioning using stable isotopes:
534 coping with too much variation. PLoS ONE 5:e9672

535 Parnell A, Jackson A (2013) Stable Isotope Analysis in R.

536 Peterson BJ, Fry B (1987) Stable isotopes in ecosystem studies. Annu Rev Ecol Syst 18:293–
537 320

538 Phillips DL, Inger R, Bearhop S, Jackson AL, Moore JW, Parnell AC, Semmens BX, Ward
539 EJ (2014) Best practices for use of stable isotope mixing models in food-web studies.
540 Can J Zool 92:823–835

541 Post DM (2002) Using stable isotopes to estimate trophic position: models, methods, and
542 assumptions. Ecology 83:703–718

543 R Core Team (2015) R: A Language and Environment for Statistical Computing. R
544 Foundation for Statistical Computing, Vienna, Austria

545 Raffaelli DG, Hawkins SJ (1999) Intertidal ecology. Kluwer Academic Publishers

546 Raven JA, Hurd CL (2012) Ecophysiology of photosynthesis in macroalgae. Photosynth Res
547 113:105–125

548 Ricciardi A, Bourget E (1999) Global patterns of macroinvertebrate biomass in marine
549 intertidal communities. Mar Ecol Prog Ser 185:21–35

550 Riera P, Escaravage C, Leroux C (2009) Trophic ecology of the rocky shore community
551 associated with the *Ascophyllum nodosum* zone (Roscoff, France): A $\delta^{13}\text{C}$ vs $\delta^{15}\text{N}$
552 investigation. *Estuar Coast Shelf Sci* 81:143–148

553 Rigolet C, Thiébaud E, Brind'Amour A, Dubois SF (2015) Investigating isotopic functional
554 indices to reveal changes in the structure and functioning of benthic communities.
555 *Funct Ecol* 29:1350–1360

556 Rindi F, Guiry MD (2004) Composition and spatio temporal variability of the epiphytic
557 macroalgal assemblage of *Fucus vesiculosus* Linnaeus at Clare Island, Mayo, western
558 Ireland. *J Exp Mar Biol Ecol* 311:233–252

559 Rio A, Cabioch J (1988) Apparition du *Caulacanthus ustulatus* (Rhodophyta, Gigartinales)
560 dans la Manche occidentale. *Cryptogam Algal* 9:231–234

561 Rooney N, McCann KS, Moore JC (2008) A landscape theory for food web architecture. *Ecol*
562 *Lett* 11:867–881

563 Sarà G, De Pirro M, Romano C, Rumolo P, Sprovieri M, Mazzola A (2007) Sources of
564 organic matter for intertidal consumers on *Ascophyllum*-shores (SW Iceland): a multi-
565 stable isotope approach. *Helgol Mar Res* 61:297–302

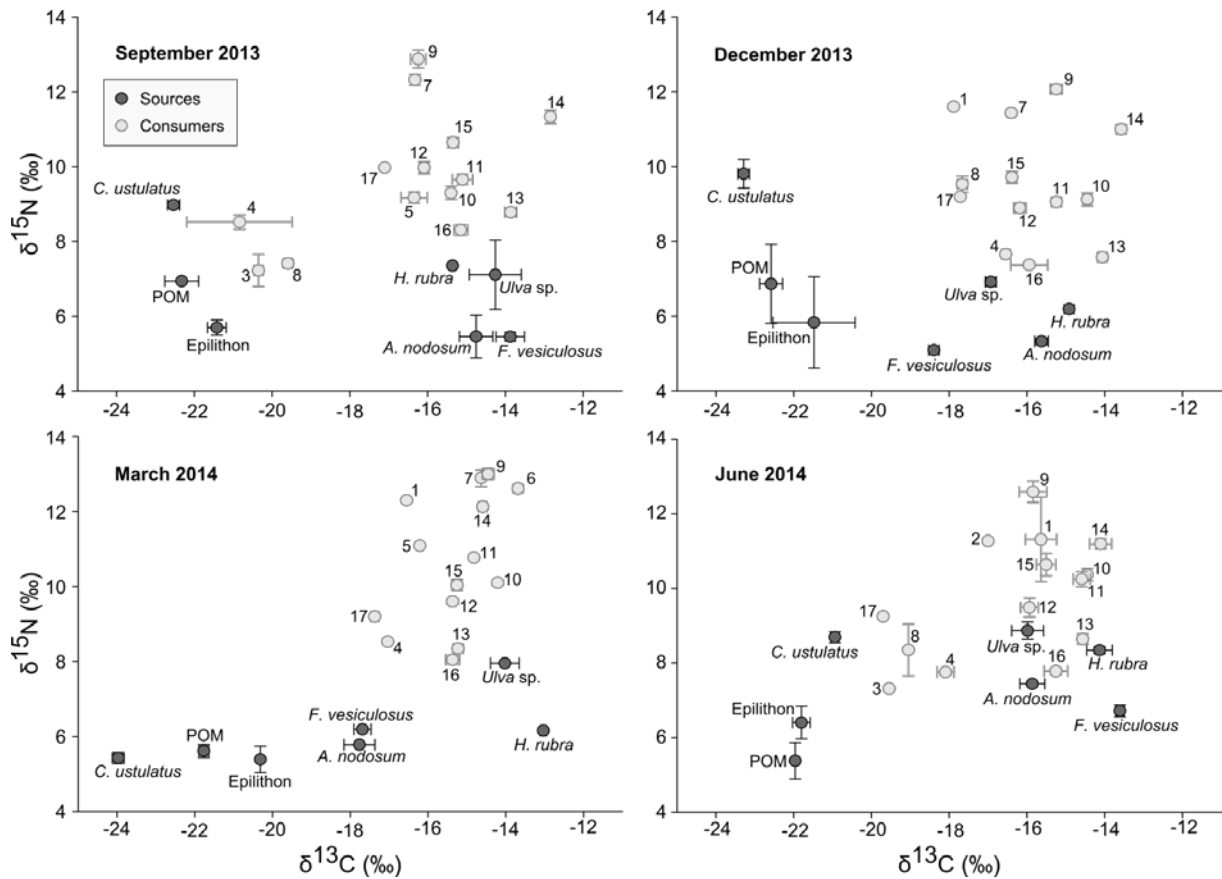
566 Schaal G, Riera P, Leroux C (2011) Microscale variations of food web functioning within a
567 rocky shore invertebrate community. *Mar Biol* 158:623–630

568 Schaal G, Riera P, Leroux C, Grall J (2010) A seasonal stable isotope survey of the food web
569 associated to a peri-urban rocky shore. *Mar Biol* 157:283–294

570 Schlacher TA, Connolly RM (2014) Effects of acid treatment on carbon and nitrogen stable
571 isotope ratios in ecological samples: a review and synthesis. *Methods Ecol Evol*
572 5:541–550

- 573 Silva A, Hawkins S, Boaventura D, Brewster E, Thompson R (2010) Use of the intertidal
574 zone by mobile predators: influence of wave exposure, tidal phase and elevation on
575 abundance and diet. *Mar Ecol Prog Ser* 406:197–210
- 576 Smith JR, Vogt SC, Creedon F, Lucas BJ, Eernisse DJ (2014) The non-native turf-forming
577 alga *Caulacanthus ustulatus* displaces space-occupants but increases diversity. *Biol*
578 *Invasions* 16:2195–2208
- 579 Steinarsdóttir MB, Ingólfsson A, Ólafsson E (2009) Trophic relationships on a fucoid shore in
580 south-western Iceland as revealed by stable isotope analyses, laboratory experiments,
581 field observations and gut analyses. *J Sea Res* 61:206–215
- 582 Thompson RM, Hemberg M, Starzomski BM, Shurin JB (2007) Trophic levels and trophic
583 tangles: the prevalence of omnivory in real food webs. *Ecology* 88:612–617
- 584 Underwood AJ (1984) Microalgal food and the growth of the intertidal gastropods *Nerita*
585 *atramentosa* Reeve and *Bembicium nanum* (Lamarck) at four heights on a shore. *J Exp*
586 *Mar Biol Ecol* 79:277–291
- 587 Vanderklift MA, Bearham D (2014) Variation in $\delta^{13}\text{C}$ and $\delta^{15}\text{N}$ of kelp is explained by light
588 and productivity. *Mar Ecol Prog Ser* 515:111–121
- 589 Viana IG, Bode A, Bartholomew M, Valiela I (2015) Experimental assessment of the
590 macroalgae *Ascophyllum nodosum* and *Fucus vesiculosus* for monitoring N sources at
591 different time-scales using stable isotope composition. *J Exp Mar Biol Ecol* 466:24–33
- 592 Wahl M (2009) *Marine Hard Bottom Communities: Patterns, Dynamics, Diversity, and*
593 *Change*. Springer Science & Business Media
- 594 Warry FY, Reich P, Woodland RJ, Thomson JR, Nally RM, Cook PLM (2016) Nitrogen
595 stable isotope values of large-bodied consumers reflect urbanization of coastal
596 catchments. *Mar Ecol Prog Ser* 542:25–37

- 597 Watson DC, Norton TA (1985) Dietary preferences of the common periwinkle, *Littorina*
598 *littorea* (L.). J Exp Mar Biol Ecol 88:193–211
- 599 Zanden MJV, Rasmussen JB (2001) Variation in $\delta^{15}\text{N}$ and $\delta^{13}\text{C}$ trophic fractionation:
600 Implications for aquatic food web studies. Limnol Oceanogr 46:2061–2066
- 601



602

603 **Figure 1:** Mean \pm SE of $\delta^{15}\text{N}$ (‰) vs $\delta^{13}\text{C}$ (‰) for primary producers and consumers of the

604 *Fucus vesiculosus* community, sampled in September and December 2013 and March and

605 June 2014. Sources are represented by dark-grey rounds and their names are indicated nearby,

606 while consumers are represented by light-grey rounds. Consumers : 1 *Actinia equina*; 2

607 *Actinia fragacea*; 3 *Alcyonidium* sp.; 4 Amphipods; 5 *Anemonia viridis*; 6 *Asterina gibbosa*; 7

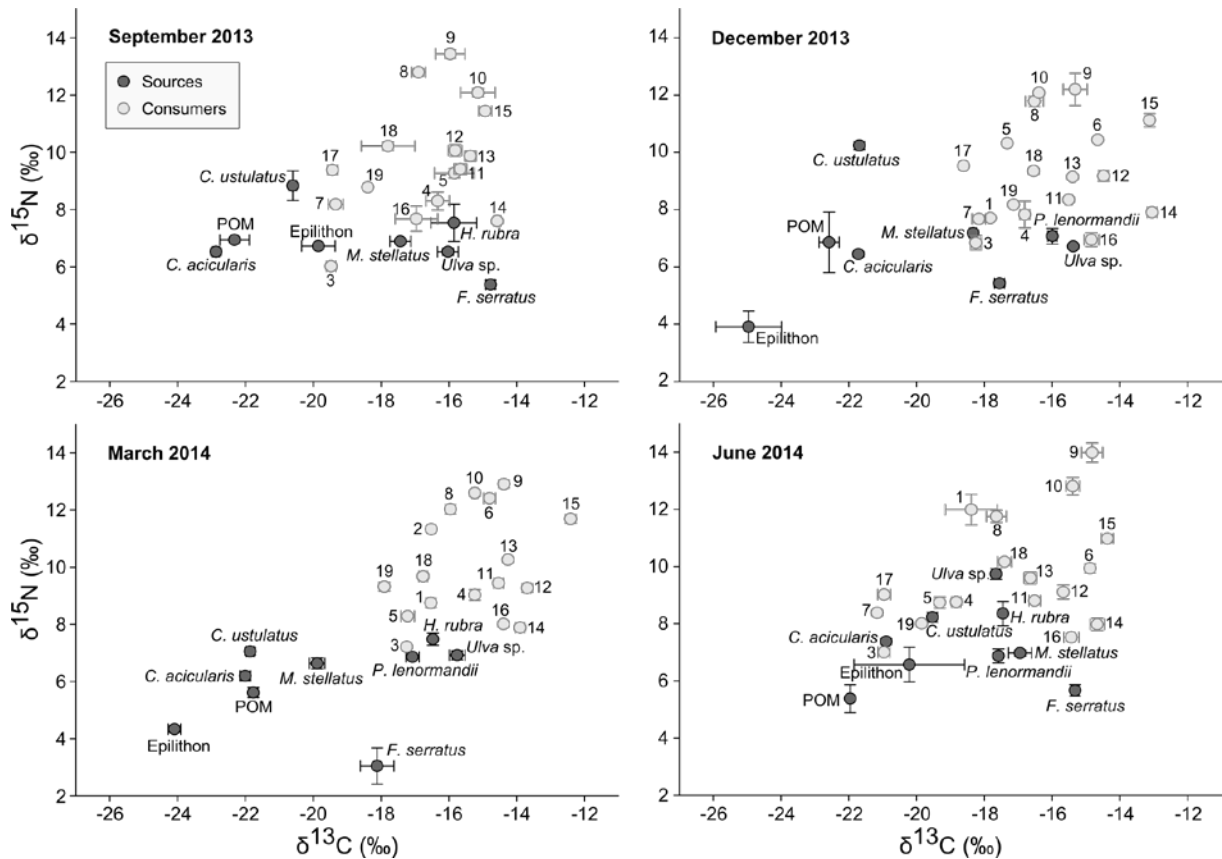
608 *Calliostoma zizyphinum*; 8 Campanulariidae; 9 *Carcinus maenas*; 10 *Gibbula pennanti*; 11

609 *Gibbula umbilicalis*; 12 *Littorina littorea*; 13 *Littorina obtusata*; 14 *Nucella lapillus*; 15

610 *Phorcus lineatus*; 16 *Patella vulgata*; 17 *Spirorbis* sp. Values are given in Supplementary

611 Material 1.

612



613

614 **Figure 2:** Mean \pm SE of $\delta^{15}\text{N}$ (‰) vs $\delta^{13}\text{C}$ (‰) for primary producers and consumers of the
 615 *Fucus serratus* community, sampled in September and December 2013 and March and June

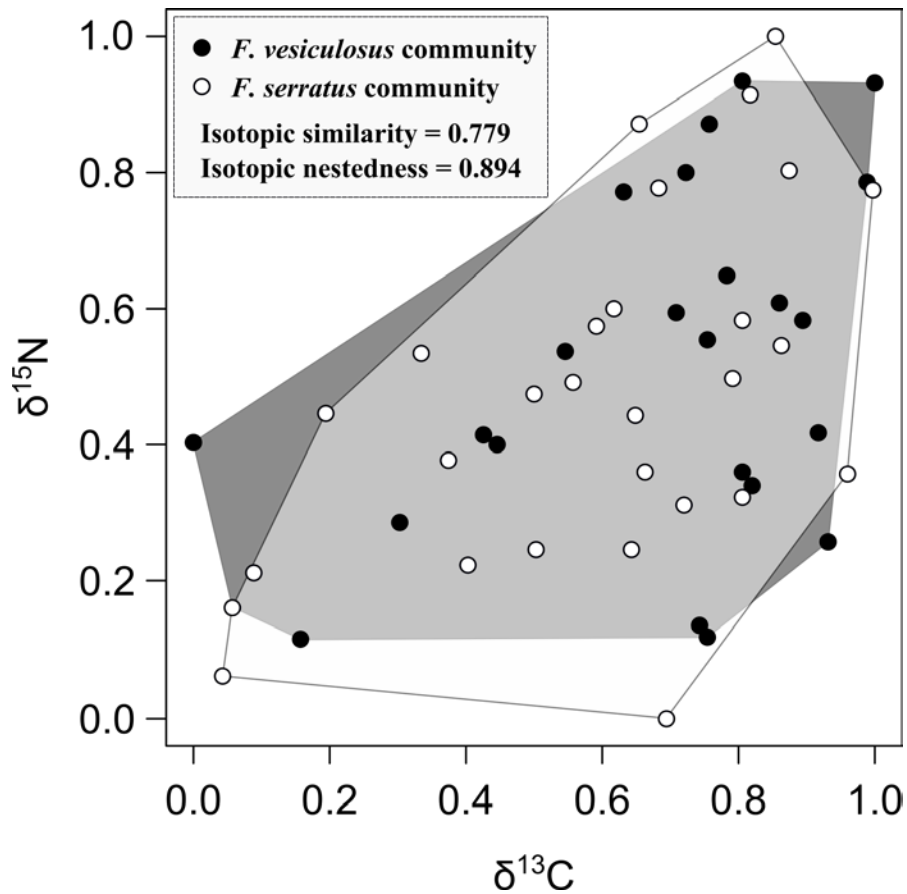
616 2014. Sources are represented by dark-grey rounds and their names are indicated nearby,
 617 while consumers are represented by light-grey rounds. Consumers : 1 *Actinia equina*; 2

618 *Actinia fragacea*; 3 *Alcyonidium* sp.; 4 Amphipods; 5 *Anemonia viridis*; 6 *Asterina gibbosa*; 7
 619 *Botryllus schlosseri*; 8 *Calliostoma zizyphinum*; 9 *Cancer pagurus*; 10 *Carcinus maenas*; 11

620 *Gibbula cineraria*; 12 *Gibbula pennanti*; 13 *Gibbula umbilicalis*; 14 *Littorina obtusata*; 15
 621 *Nucella lapillus*; 16 *Patella vulgata*; 17 Polyclinidae; 18 *Porcellana platycheles*;

622 19 *Spirorbis* sp. Values are given in Supplementary Material 2.

623



624

625 **Figure 3:** Annual mean of scaled $\delta^{15}\text{N}$ vs scaled $\delta^{13}\text{C}$ for primary producers and consumers of
 626 the *F. vesiculosus* (black rounds) and *F. serratus* (white rounds) communities. Isotopic spaces
 627 are represented in dark-grey for the *F. vesiculosus* community and in white for the *F. serratus*
 628 community. The light-grey space represents the intersection of these two isotopic spaces.

629